

## **Peugeot 106 from 1997 - wiring diagrams**

### **Key to circuits**

*Diagram 25* Information for wiring diagrams - from 1997 model year

*Diagram 26* Typical starting, charging, automatic transmission and engine cooling fan - from 1997 model year

*Diagram 27* Typical warning lights and gauges - from 1997 model year

*Diagram 28* Typical single-point fuel injection - from 1997 model year

*Diagram 29* Typical multi-point fuel injection - from 1997 model year

*Diagram 30* Typical exterior lighting - from 1997 model year

*Diagram 31* Typical exterior lighting continued - from 1997 model year

*Diagram 32* Typical interior lighting, horn, cigar lighter and heater blower - from 1997 model year

*Diagram 33* Typical wash/wipe, heated rear window and headlight levelling - from 1997 model year

*Diagram 34* Typical central locking and electric windows - from 1997 model year

*Diagram 35* Typical electric mirrors, in-car entertainment and airbag - from 1997 model year

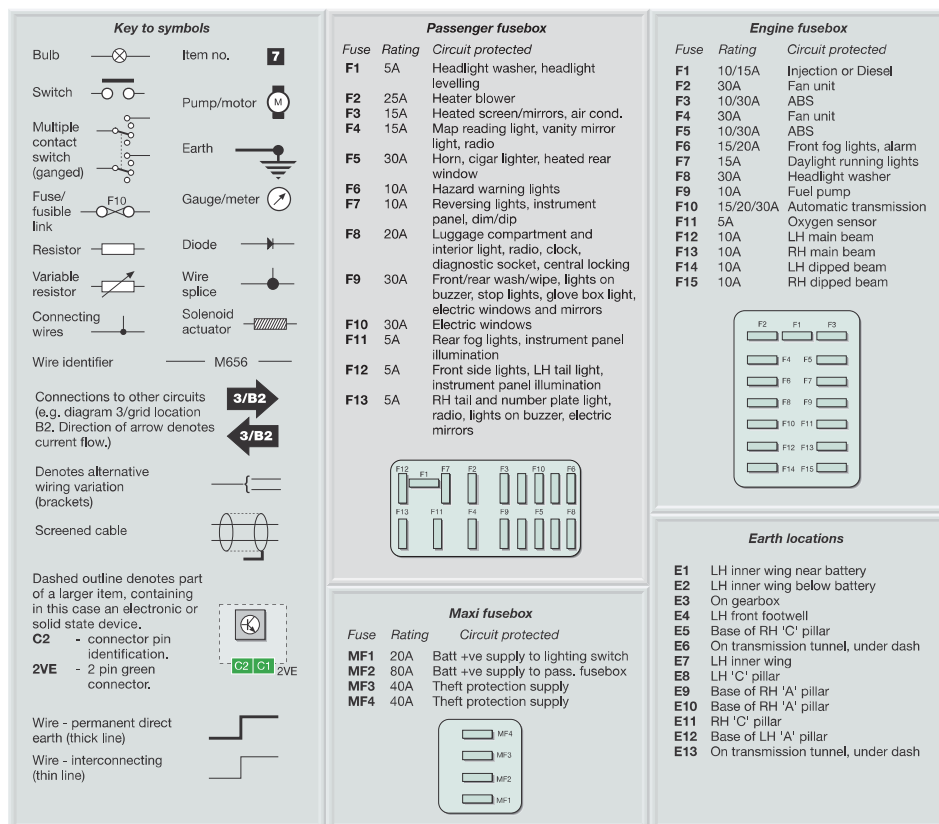


Diagram 25 : Information for wiring diagrams - from 1997 model year

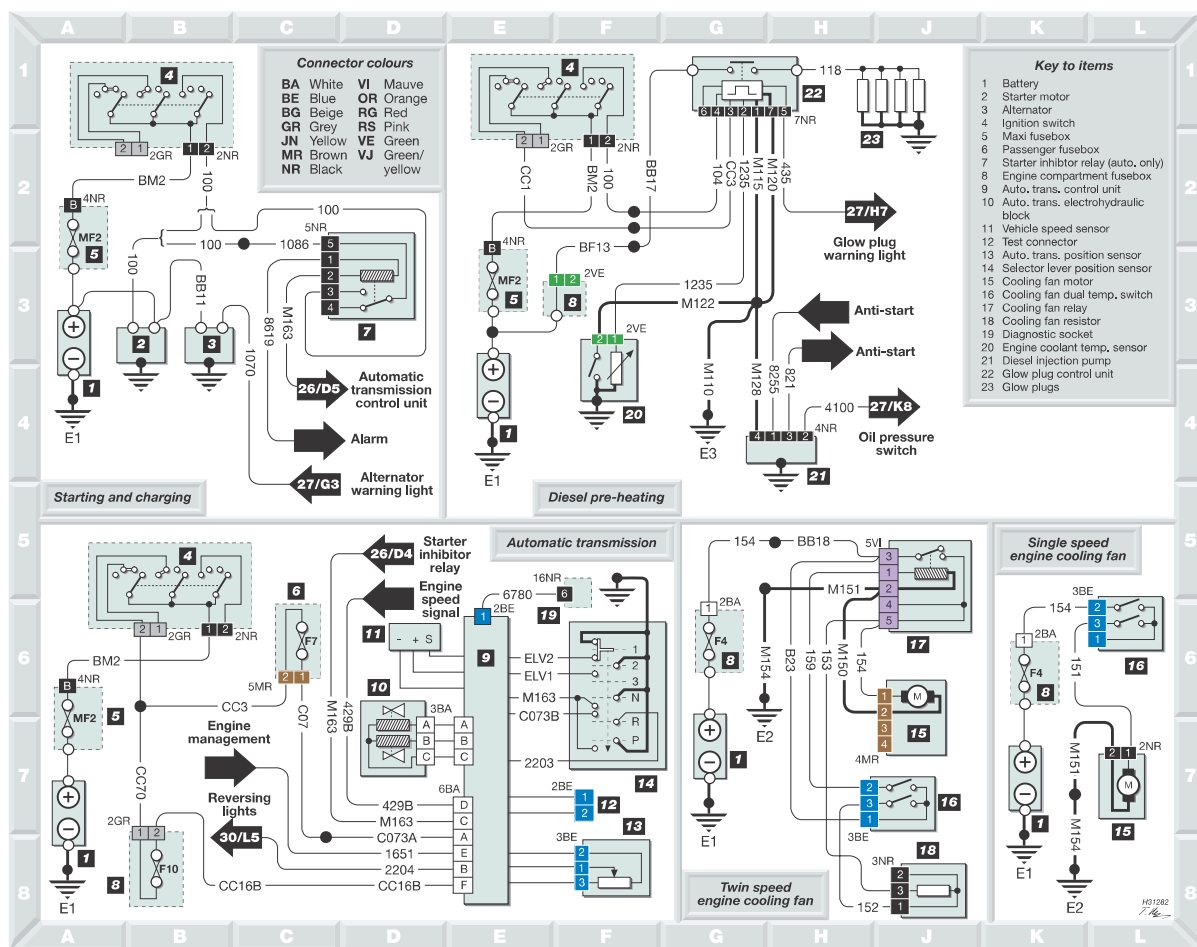


Diagram 26 : Typical starting, charging, automatic transmission and engine cooling fan - from 1997 model year

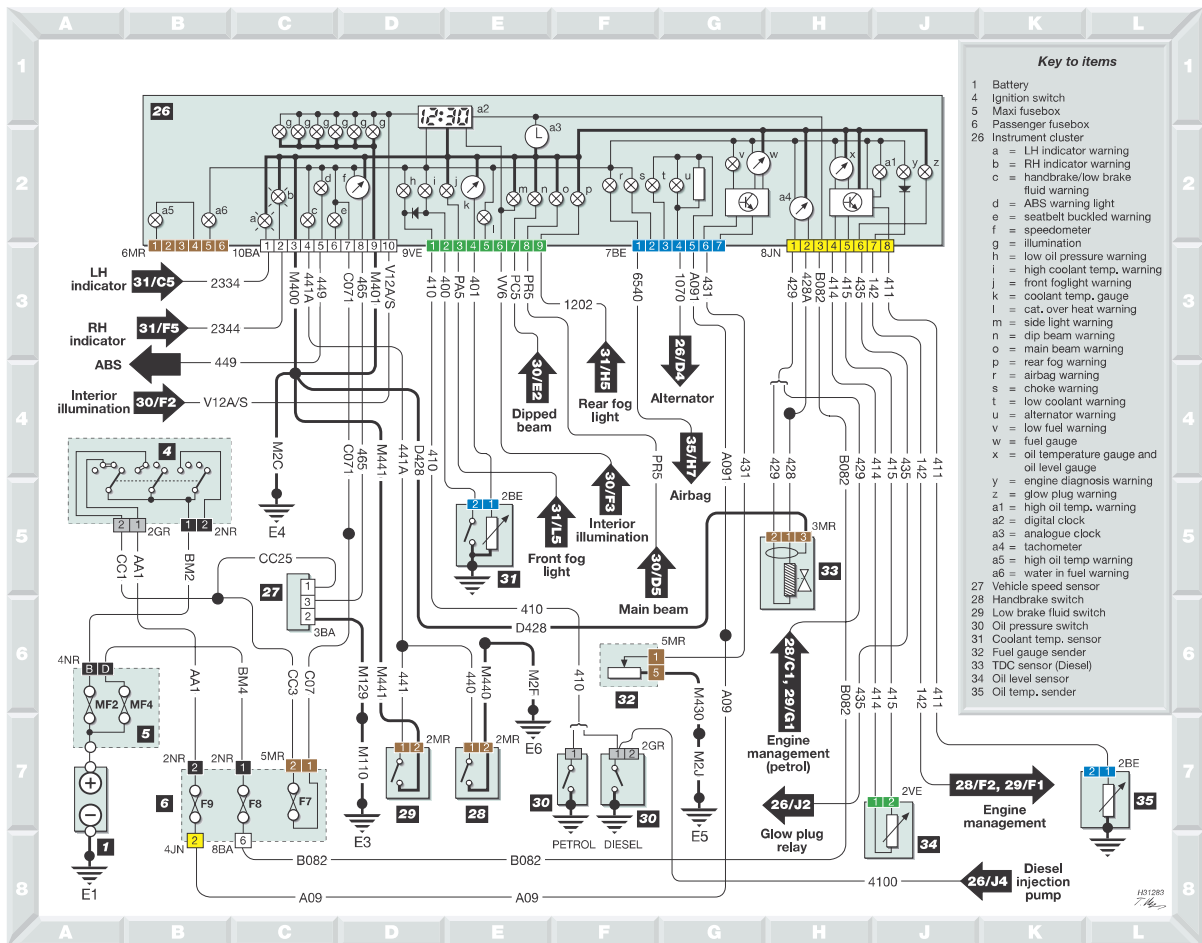
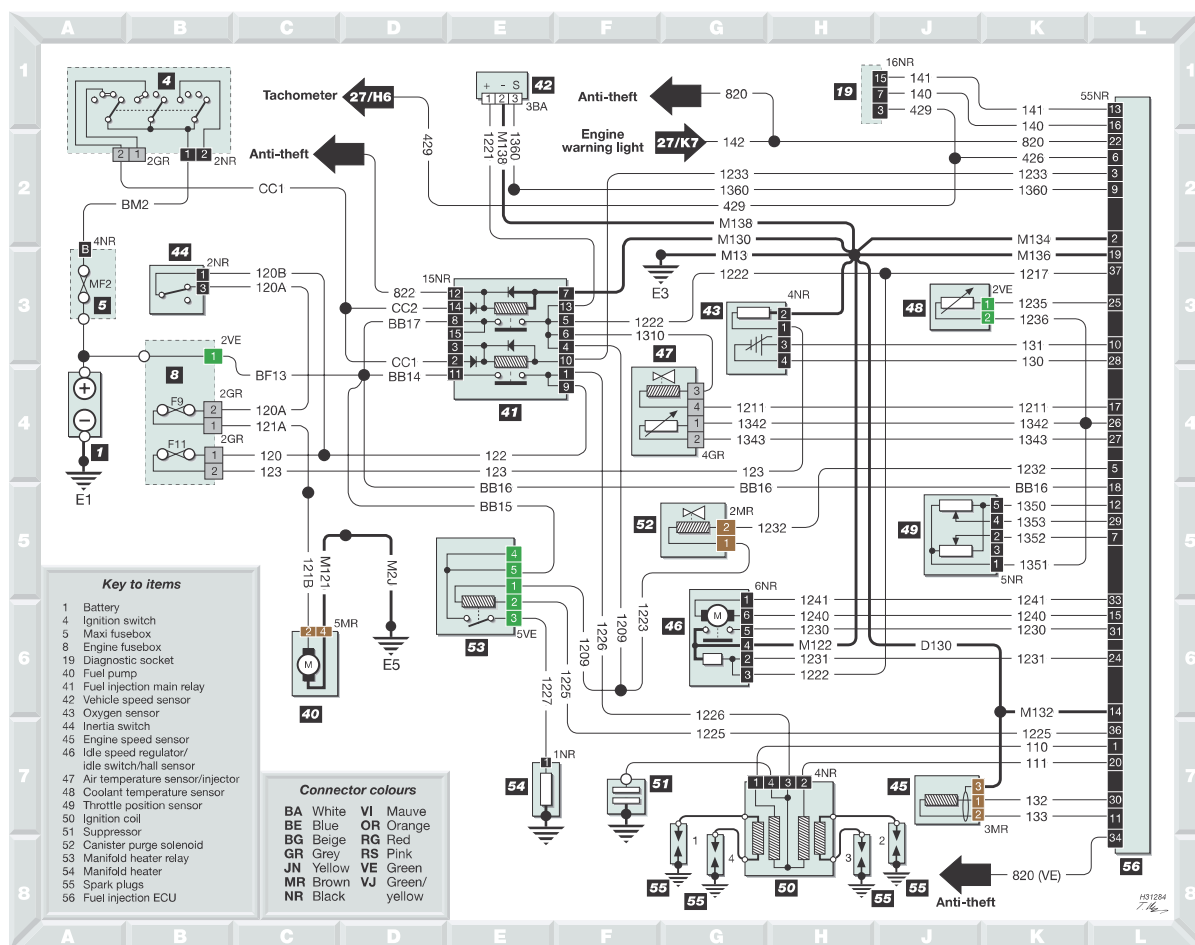


Diagram 27 : Typical warning lights and gauges - from 1997 model year



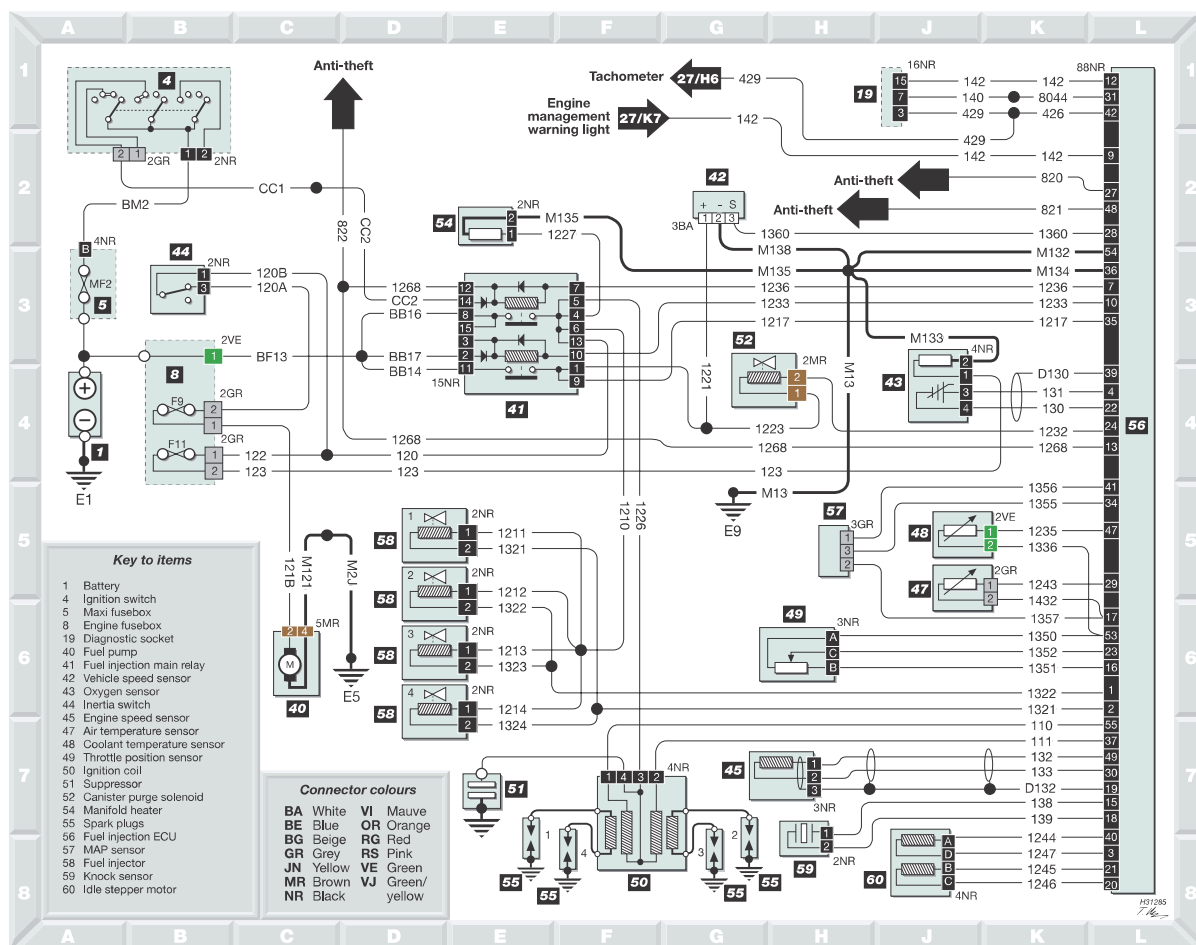
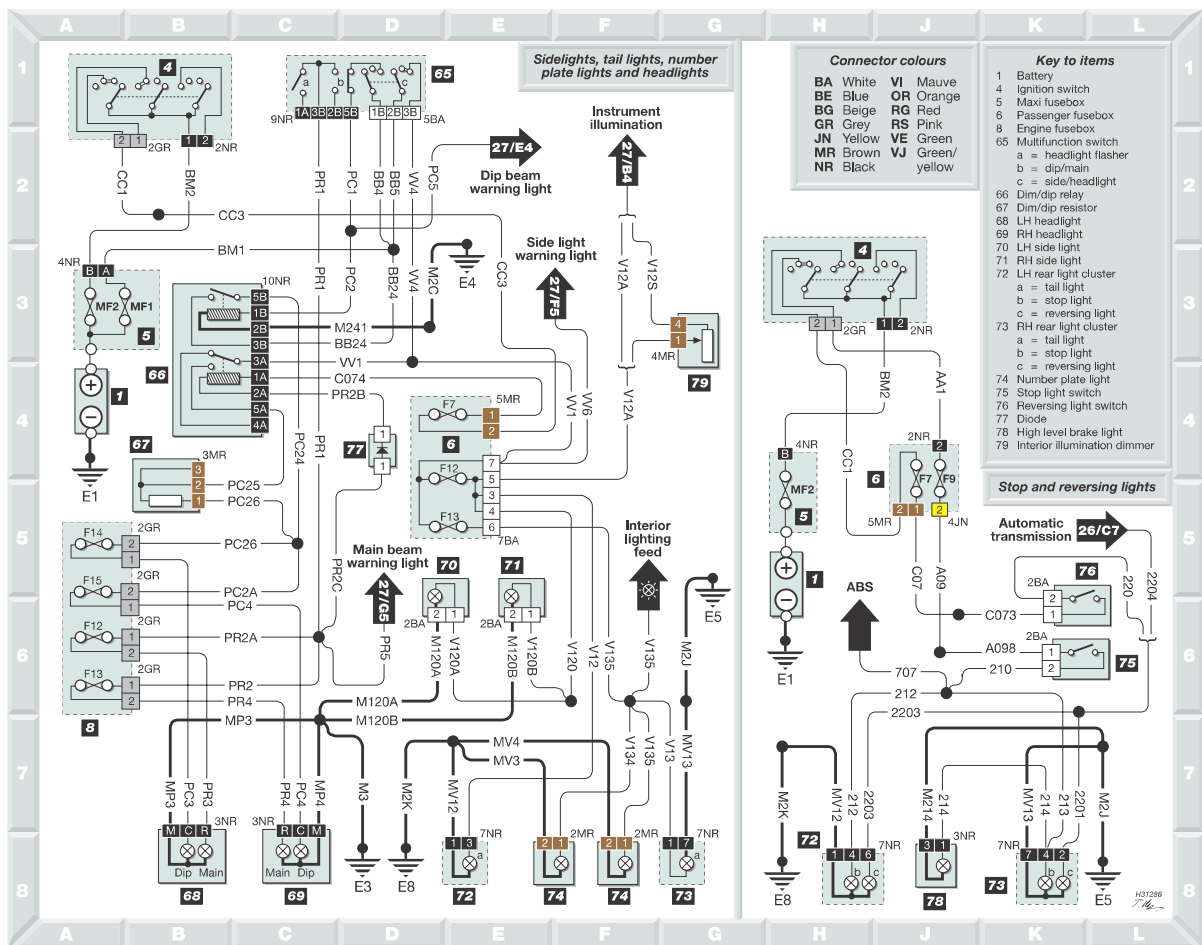


Diagram 29 : Typical multi-point fuel injection - from 1997 model year



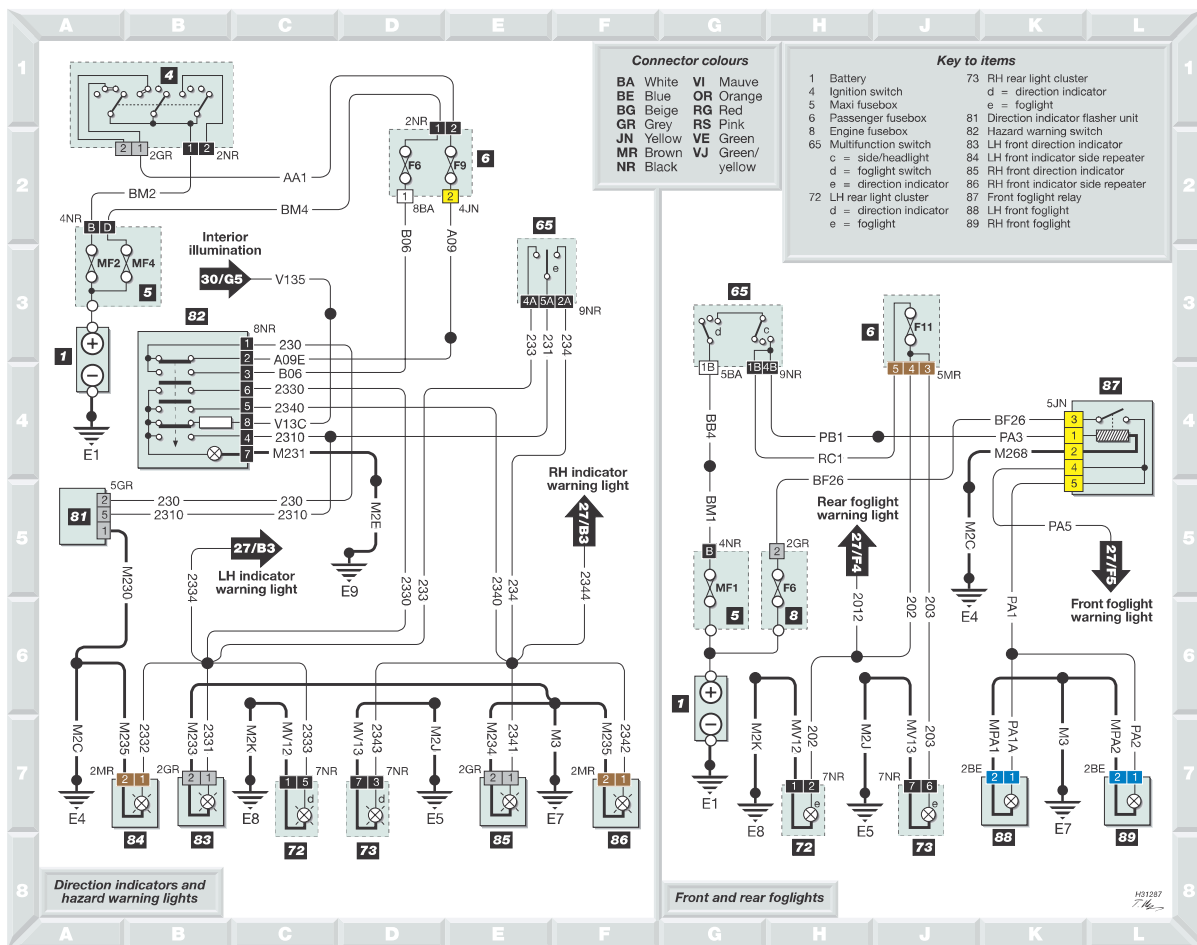


Diagram 31 : Typical exterior lighting continued - from 1997 model year

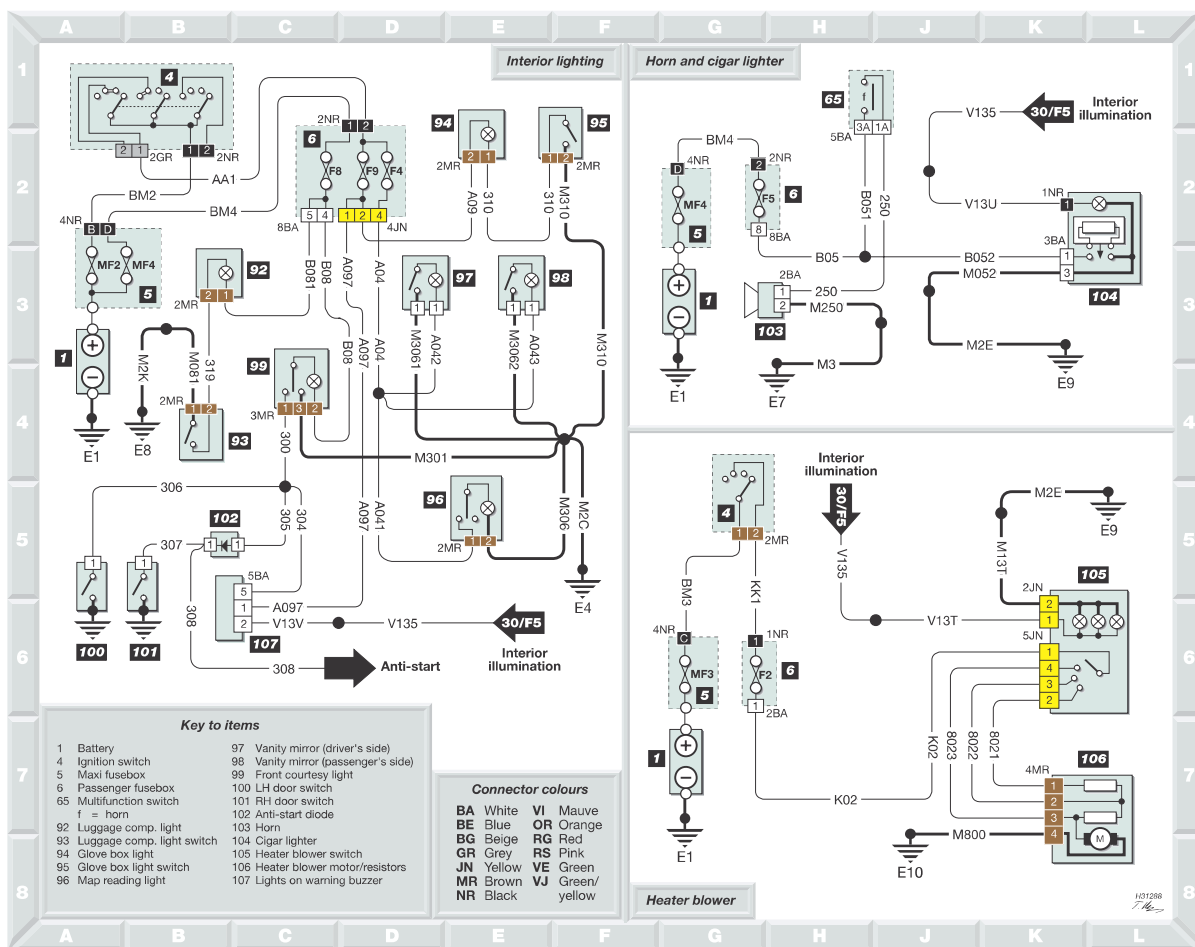


Diagram 32 : Typical interior lighting, horn, cigar lighter and heater blower - from 1997 model year



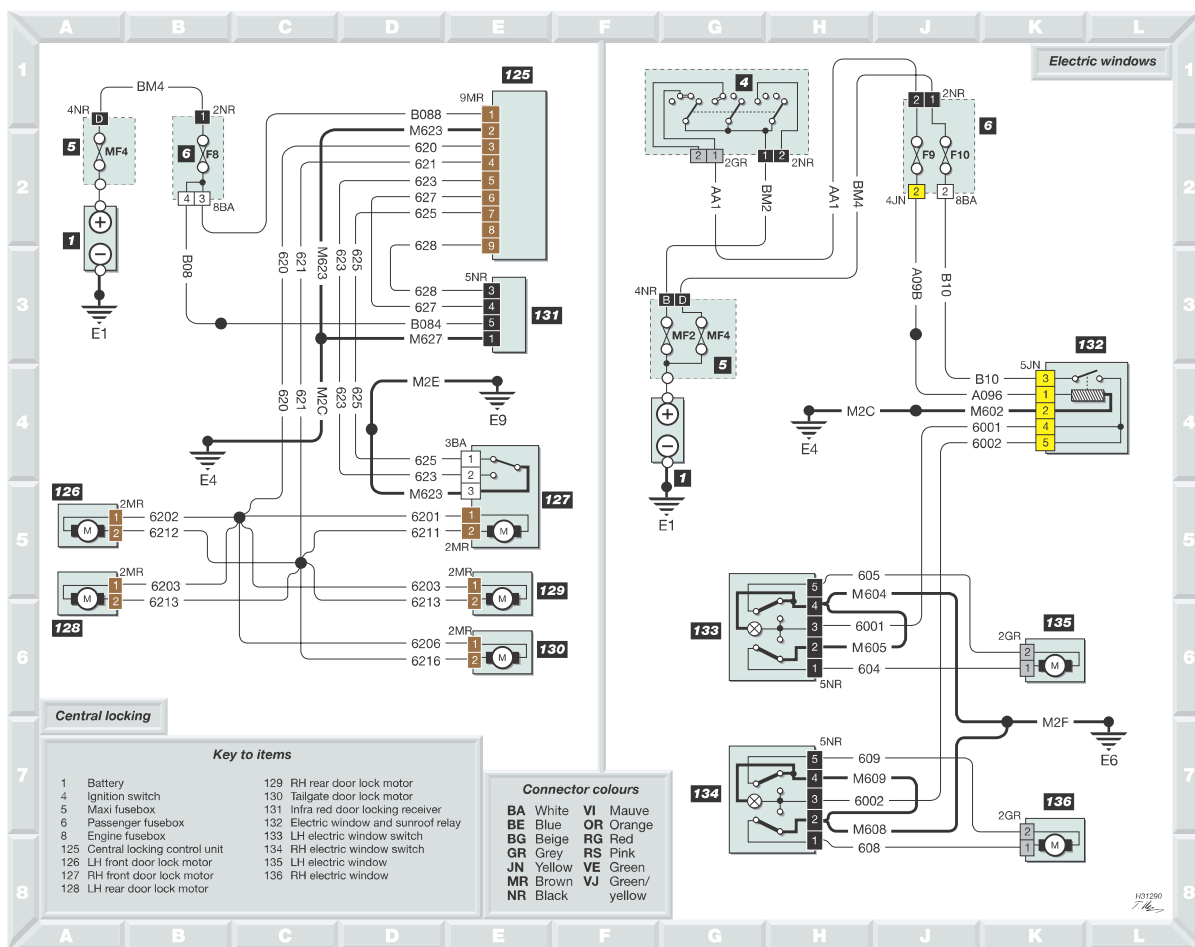


Diagram 34 : Typical central locking and electric windows - from 1997 model year

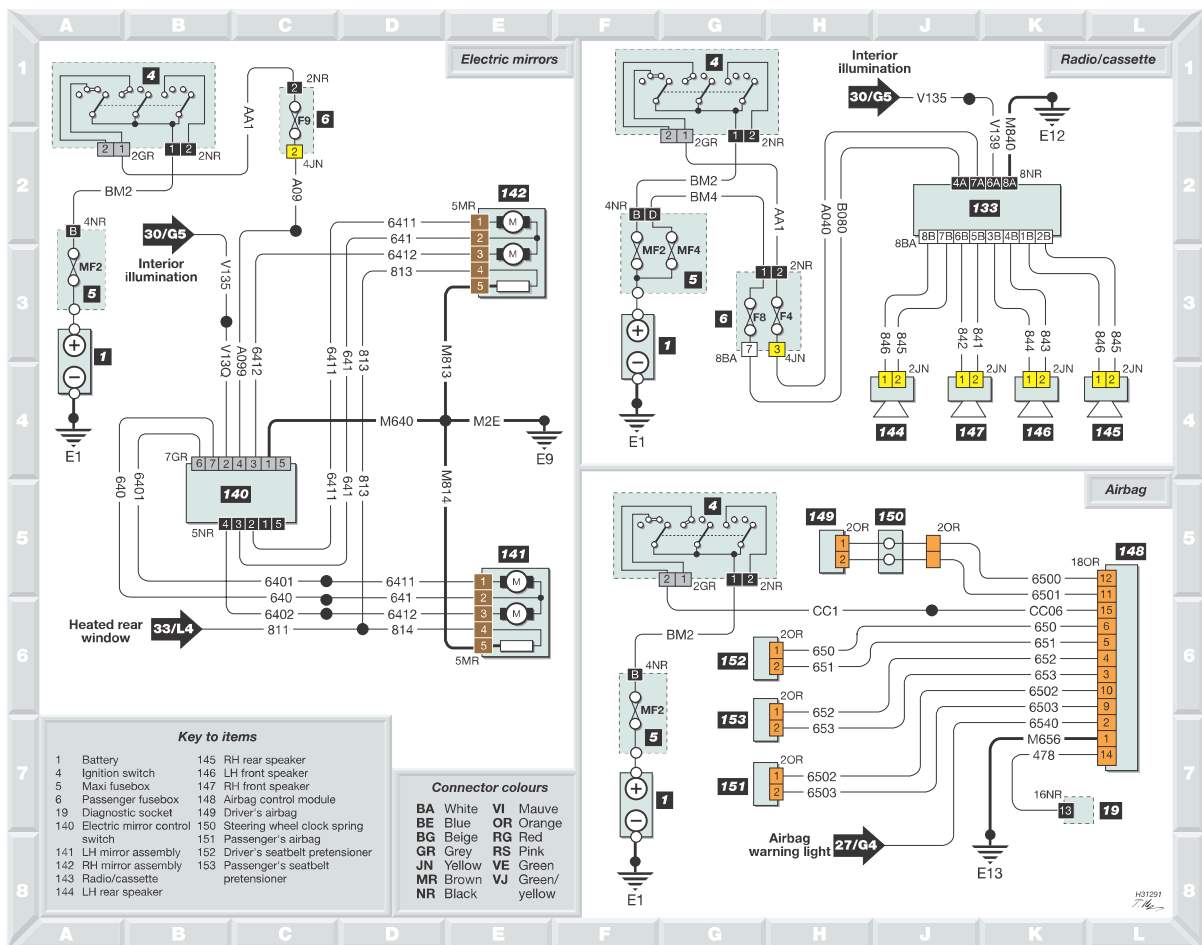


Diagram 35 : Typical electric mirrors, in-car entertainment and airbag - from 1997 model year